

BIRR THEATRE AND ARTS CENTRE

OXMANTOWN HALL

BIRR, CO. OFFALY

Admin: (057) 9122893 • Box Office (057) 9122911
info@birrtheatre.com • www.birrtheatre.com

Offaly's Centre for the Arts



Birr Theatre
&
Arts Centre

TECHNICAL DETAILS AND INFORMATION SHEET

STAGE DETAILS

Stage dimensions – wall to wall:	8.84m x 4.88m (29ft x 16ft)
Performing space:	Approx 7.31m x 4.88m (24ft x 16ft)
Adjustable legs - 4 each side of stage:	1.5m-approx full width
Height – From stage to lighting rig:	approx 5.5m
Entrance to stage:	1.5m x 2m (6.5ft x 5ft)
7.2m straight white cyc	
8m overlap black stage curtain	
Auditorium Floor Space 10m x 8.95m	
Stage Extension available: Add extra 4ft depth*	
<i>(can also be used as Risers - 4 x 4"x4"; 5 x 4"x2"; 18" and 10" leg options)</i>	
<i>*note: When stage extended, two rows of seats (26 seats) are lost</i>	

LIGHTING

Lighting Grid – Front of House Bar, 3 bars over stage and cyc truss	
78, 16amp Cee Form Socket Outlets on Grid (some linked)	
8, 16amp Cee Form Socket Outlets at Ground Level (linked)	
Jands Vista M1 Lighting Media Console with 1 Universe / 512 Channels (tutorials listed below)	
ViewSonic TD2220 LED – Backlit LCD Monitor 22 Inch – Touchscreen	
4 X ProLights LUMIPIX12Q 12x8W RGBW/FC Pixel-Map LED Bar/20° Beam/ IP33/120	
10 X ProLights STUDIOCOBFC 1x150W Full Colour CREE Projector/HD-Dimming/ IP20/155W/60°	
4 x 15° Degree lens for ProLights STUDIOCOBFC	
6 x Thomas 1kw Par 64 lantern and barndoors	
6 x ETC 575 Source 4 Profile - 19°	6 x ETC Source 4 Zoom Profile - 19°
4 x Strand 650w Profile – Quartet	2 x Brio Profiles
5 x Strand 1.2kw Fresnel – Cantata	4 x ADB Fresnel 1.2kw
6 x Strand 650w Fresnel and barndoors – Quartet	4 x Strand 1kw Cyc unit – 1000w Nocturne

SOUND

PA:	4 x Bose 802 speakers 2 x dB Technologies SUB 612 2 x dB Technologies Opera 12 (Front Fill) 4 x The Box Stage Monitors Behringer Crossover 1 x Midas M32R Live 1 x Midas DL32 Stage Box 1 x 24 way multi-core, 6 returns Behringer X Air XR18
Mics:	5 x Shure SM58 2 x Shure SM57 2 x Sennheiser E835 2 x Behringer B-5 Single Diaphragm Condenser Mics 3 x Sennheiser Shotgun Mics 2 x Sennheiser Handheld Mics 1 x Label Mic 4 x DI Boxes

BIRR THEATRE AND ARTS CENTRE

OXMANTOWN HALL

BIRR, CO. OFFALY

Admin: (057) 9122893 • Box Office (057) 9122911
info@birrtheatre.com • www.birrtheatre.com

Offaly's Centre for the Arts



Birr Theatre
&
Arts Centre

MULTI-MEDIA & GENERAL EQUIPMENT	Multi-media projector fixed on Front of House bar (Bring your own Laptop). DVD and Video player Yamaha Clavinova – CLP 545 Canford Talk Back System to all positions – Front of House, Greenroom, Sound Box
	Mini disk player 4 x Music Stands
BILLING FOR THE VENUE	Birr Theatre & Arts Centre Box Office: 057 9122911
TICKET PRICES	All ticket prices will be subjects to booking fees calculated as a percentage of the ticket's face value.
COMP TICKETS	For all events, Venue and Company are assigned 6 comp tickets each. Birr Theatre use comp tickets for staff, volunteers, advertisers, funders. We may not always use the full allocation. Tickets for Social Media / Press competitions are a marketing activity and will be in addition to the above comp allocation.
GENERAL INFORMATION	<ul style="list-style-type: none">• Two Dressing Rooms with mirrors, wc, shower, costume rails, sockets, iron & ironing board.• Seating Capacity – c. 220 seats• Access to the stage via stage doors (not through main auditorium)• Tea/Coffee making facility available in greenroom. <p><i>Wine and bottled water from the bar will be charged.</i></p> <ul style="list-style-type: none">• Stage Extensions / risers with legs – 2 x 4x4 ; 5 x 2x4 sections.
ORCHESTRA SPACE	Birr Theatre & Arts Centre does not have a designated orchestra pit. However, the first two rows of the seating rig can be retracted to provide space. In the interest of safety, the emergency exit door to the front left of the stage must be kept clear <u>at all times</u> , therefore musicians must be a <u>minimum</u> of 40 inches from the stage. Furthermore, people in wheelchairs must be facilitated and will be located beside the orchestra. The number of wheelchairs that can be facilitated will depend on the size of the orchestra, however a minimum of 2 wheelchairs must be facilitated at all times.
PARKING	You are reminded that Birr Theatre & Arts Centre is located in a residential area with ample street parking. However, please be careful not to block private entrances . There is no parking permitted in front of the building during a performance – <u>set down only</u> . Once get-in is finished you are asked to remove your vehicle from the front of the building (please ensure this is done by 7.15pm at the latest). <i>Please note: the gates to each side of the theatre are entrances to private residence.</i>
CURTAIN UP	Get-in, sound and lighting checks must be finished by 6.45pm for 8pm curtain up
INTERNET ACCESS	Wireless Broadband is available in the Greenroom and Auditorium. Due to space restrictions, the Greenroom is used during the day as office and is a place of business. Kindly advise cast/crew that access to the office PCs is strictly forbidden and is for use of employees of the company only.
GETTING TO BIRR	Bus: Private operator – Kearns of Birr 057 9120124 / www.kearnstransport.com http://www.buseireann.ie/site/your_journey/expressway_services.asp Train: to Tullamore – www.irishrail.ie By Road: Many routes (<i>please note if coming from Dublin via Portlaoise: do not take a right turn in Mountrath as directed on old sign post and even if directed by Sat. Nav. (this is the 'scenic route') – head for Roscrea instead!!!</i>)

BIRR THEATRE AND ARTS CENTRE

OXMANTOWN HALL

BIRR, CO. OFFALY

Admin: (057) 9122893 • Box Office (057) 9122911
info@birrtheatre.com • www.birrtheatre.com

Offaly's Centre for the Arts



Birr Theatre
&
Arts Centre

MARKETING/PR

With regard to marketing, Birr Theatre & Arts Centre provides a tailored online and offline marketing strategy for each event. We provide the following:

Press & Broadcast Media

- Initial press release to local papers/radio, incl some national, announcing event
- Features on the performers/event pitched to local newspapers including the *Midland Tribune*, *Offaly Independent*, *Tullamore Tribune* & *Nenagh Guardian*
- Features pitched to local radio including Encore Arts Show on Midlands 103
- Listing sent to the *Irish Times* The Ticket and the *Irish Independent's* Hotlist
- Further press release sent to local papers closer to the time of the performance
- Event flyers handed out at other Birr Theatre & Arts Centre events in the run up to the performance

Social Media & Digital Content

- Listed on Birr Theatre & Arts Centre website www.birrtheatre.com
- Promoted weekly/bi weekly through social media platforms; Facebook, Twitter, Instagram.
- Key prompts 'A Month To Go' & 'Two Weeks To Go' also featured on our social media platforms
- Paid for digital advertising through boost post and targeted ads on Facebook
- Ticket giveaways through social media competitions to boost reach
- Featured regularly in our email bulletin to 4500 patrons
- Featured in the monthly Offaly Arts email bulletin
- Cross posting; depending on type of event shared through other social media platforms on pages that we manage i.e Five Birr Festivals
- Audience Segmenting -Patrons specifically with an interest in the genre directly target through email

Community based PR

- Direct target to schools, active retirement groups etc where applicable (depending on the event type and target demographic)
- Posters distributed through the town and surrounding catchment area
- Featured in our programme of events. Print run of 5000. Distributed throughout the town and surrounding catchment area which takes in North Tipp, East Galway, the rest of Offaly & Laois

ACCOMMODATION IN BIRR

The Stables Guesthouse - <http://thestablesbirr.com/>
Spinners on Castle Street - <http://www.spinnersbirr.com/>
Townsend House - <http://townsendhouse-guesthouse.com/>
Dooly's Hotel - <http://www.doolyshotel.com/>
The Maltings - <http://www.themaltingsbirr.com/>
Emmet House - <http://www.emmethouse.com/>
The County Arms Hotel - <https://www.countyarmshotel.com/>
Aonach B&B - <http://www.birrbandb.com/>

BIRR THEATRE AND ARTS CENTRE

OXMANTOWN HALL

BIRR, CO. OFFALY

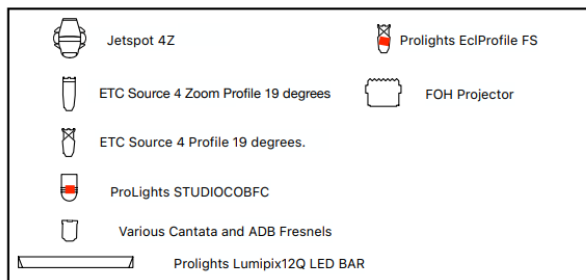
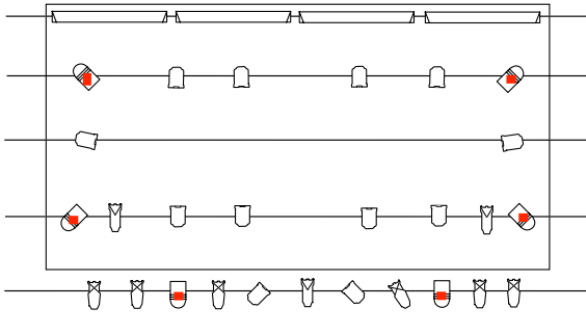
Admin: (057) 9122893 • Box Office (057) 9122911
info@birrtheatre.com • www.birrtheatre.com

Offaly's Centre for the Arts



Birr Theatre
&
Arts Centre

LIGHTING PLAN



LIGHTING DESK

Jands Vista M1 Lighting Media Console Tutorials

Introduction to Vista 3 with Jack Moorhouse

<https://youtu.be/lapJ4ZmpJck>

FX, extracts & inserted commands with Jack

Moorhouse <https://youtu.be/MlpYAIMpuhI>

Introduction to Vista 3 with Jack Moorhouse

<https://youtu.be/4QXCLxtKvHc>

"What is tracking and the tools available to manage them" with Jack Moorhouse

<https://youtu.be/d74d3AzlW5Q>

Presets & Mark Cues "Move in black" with Jack Moorhouse

<https://youtu.be/GulzJV-CnAM>